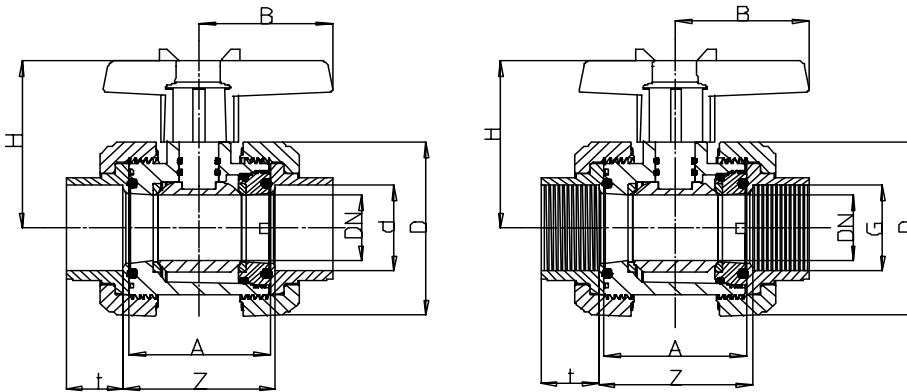




Technical data

Dimensions:



d	mm	50	63
DN	mm	40	50
G	Zoll inches	1 1/2	2
A	mm	77	87
Z	mm	87	99
t	mm	31.5	38.5
D	mm	101.5	115.3
H	mm	88.5	95
B	mm	75	75
PN	bar	16	16

Maße in mm!



General:

- Sealing material: EPDM, FPM
- Ball seating joint: PE, PTFE (Teflon)
- Body material: PVC
- Dimensions: DN40/d50 – 1 1/2" DN50/d63 – 2"

Operating pressure: PN16

Operating temperature: max. 60 °C

Connection:

- Solvent cement socket (DIN, ASTM, JIS)
- Solvent cement spigot (DIN)
- Threaded socket (BSP, NPT)
- Fusion spigot (DIN)
- Flange (ANSI, ASA, DIN, JIS)

Features:

- Radial installation or removal
- Double side blocked body
- Adjustable ball seating joint
- High durability because of PTFE or PE ball seating joint
- Maintenance free operation
- Double axle gasket
- Very easy handling and service because of:
 - o various connection varieties
 - o demounting, mounting, dismantling, and assembly without any additional tools

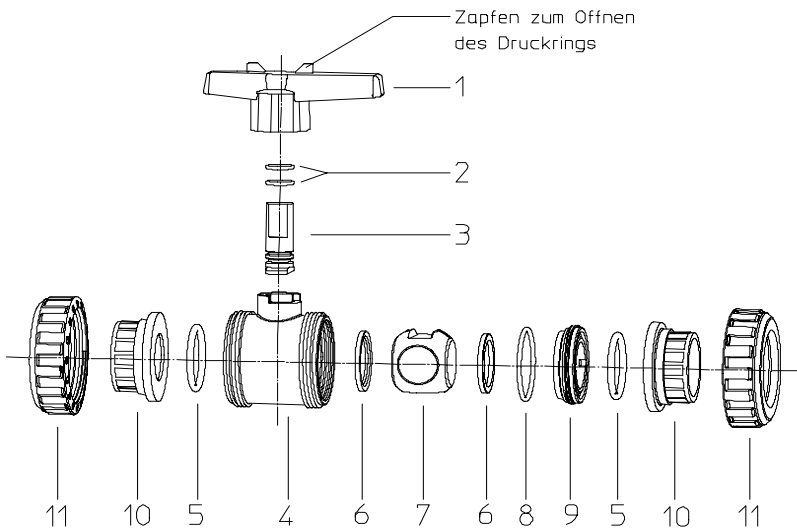
This print has the purpose of providing information but does not express any guarantees. This programme is constantly expanding and therefore the herein shown models are in accordance with state of printing. Subject to technical modification!

2 Ways Ball Valve S6 – hand operated - PVC



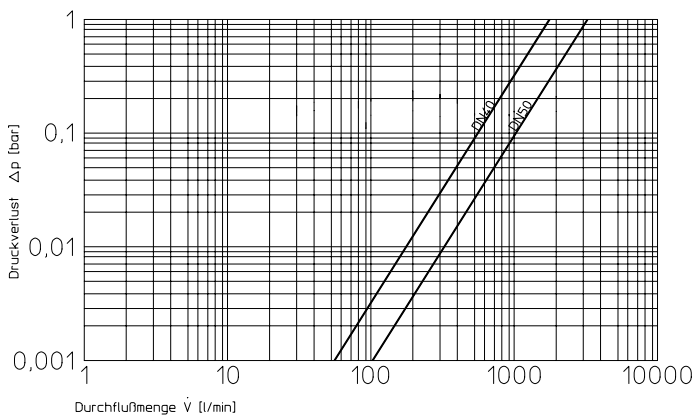
Technical data

EXPLODED VIEW



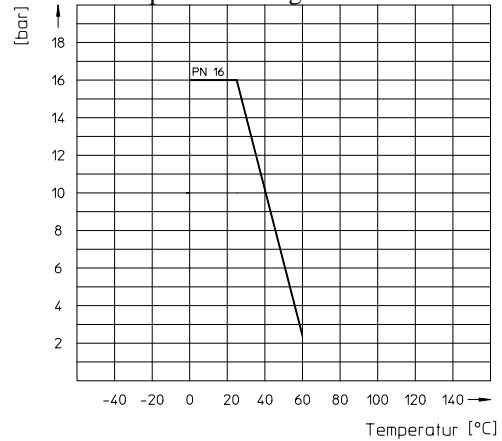
- | |
|---|
| 01. Handle |
| 02. O-Ring |
| 03. Shaft |
| 04. Body |
| 05. O-Ring |
| 06. Ball Seating Joint |
| 07. Ball |
| 08. O-Ring |
| 09. Pressure Ring |
| 10. Connections (solvent cement socket,...) |
| 11. Cap Nut |

Flow – Pressure Loss Diagram



DN	40	50
Kv-Wert l/min	1764.72	3252.42

Pressure – Temperature Diagram



2 Ways Ball Valve S6 – hand operated - PVC



Technical data

