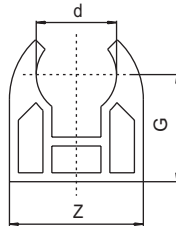


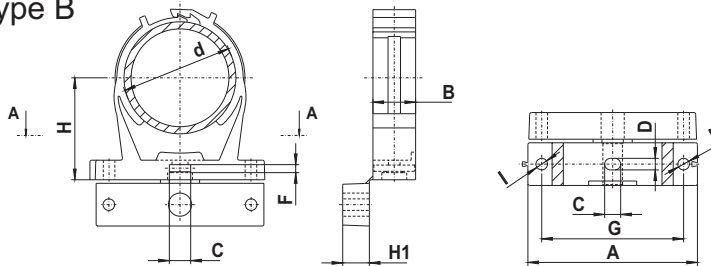
Type A

d	mm	10	12
d ₁	mm	3,2	4,2
d ₂	mm	3,1	4,2
d ₃	mm	7,0	8,0
d ₄	mm	-	-
Z	mm	16,0	19,0
G	mm	14,5	17,0



Dimensions in mm!

Type B

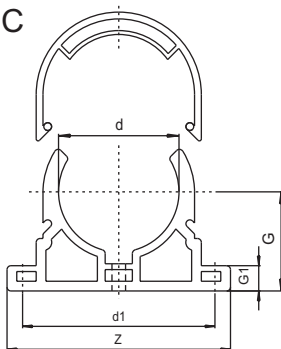


d	20-23	25-28	31-35	39-43	47-51	60-65	72-80	87-95
	1/2"	3/4"	1"	1 1/4"	1 1/2"	2"	2 1/2"	3"
H	27,0	30,0	31,5	37,0	41,0	49,0	70,0	80,0
H ₁	6,0	10,0	11,5	14,0	15,0	15,0	15,0	20,0
A	56,0	61,0	67,0	80,0	84,5	96,5	126,0	137,0
B	14,0	16,0	16,0	17,5	20,0	24,0	26,0	26,0
C	9,0	9,0	9,0	9,0	9,0	9,0	12,0	12,0
D	6,5	6,5	6,5	6,5	6,5	6,5	8,5	8,5
E	11,0	11,0	11,0	11,0	11,0	11,0	14,0	14,0
F	3,5	3,5	3,5	3,5	3,5	3,5	4,3	4,3
G	41,0	46,0	52,0	64,0	70,0	80,0	106,0	117,0
I	6,5	6,5	6,5	6,5	6,5	6,5	8,5	8,5

d 16 - 19 available on request!

Dimensions in mm!

Type C



d	mm	110	125	140	160	200	225
d ₁	mm	8,5	8,5	8,5	8,5	8,5	8,5
d ₂	mm	7,0	7,0	8,0	8,0	8,5	8,5
d ₃	mm	19,0	19,0	19,0	19,0	19,0	19,0
d ₄	mm	167,0	185,0	204,0	228,0	287,0	325,0
Z	mm	189,0	207,0	226,0	250,0	311,0	344,0
G	mm	80,0	105,0	114,0	124,0	158,0	170,5

Dimensions in mm!

Ribs for opening of brackets
(diagonally slidable)

Tongue and groove ends for
interlocking several clamps

Markings for drilling mounting
holes (template)

Attached spacer with living hinge

For metric and imperial rigid
plastic pressure piping

General:

- Dimensions: d 10, 12 (Type A)
d 16-19 - 87-95 (Type B)
d 110 - 225 (Type C)
- Material: PP

Technical specification:

for example:
TYPE "B" PRAHER
PP Pipe hanger d 20

Features:

- corrosion resistant
- for ANSI, ASTM, DIN, JIS, SCH 80 - Pipes (ONLY TYP B)
- easy assembling
- long working life

Subjects to technical modification!

Pipe hanger spacing for horizontal piping:

PVC - Pipes PN 10 + PN 16:

d mm	20°C	30°C	40°C	50°C	60°C
16	80	70	50	continuous support	
20	90	80	60		
25	95	85	65	55	40
32	105	90	70	60	45
40	120	110	90	70	55
50	140	130	110	85	65
63	150	140	120	95	70
75	165	155	135	110	80
90	180	170	150	125	95
110	200	190	170	145	115
125	210	200	185	160	125
140	225	215	195	170	140
160	240	230	210	185	155
200	255	240	225	200	170
225	270	260	240	215	185

Tab. 1

PP - Pipes PN 10 :

d mm	20°C	30°C	40°C	50°C	60°C	80°C	100°C
16	75	70	70	65	65	55	40
20	80	75	70	70	65	60	45
25	85	85	85	80	75	70	50
32	100	95	95	90	85	75	55
40	110	110	105	100	95	85	60
50	125	120	115	110	105	90	70
63	140	135	130	125	120	105	80
75	155	150	145	135	130	115	85
90	165	165	155	150	145	125	95
110	185	180	175	165	160	140	105
125	200	190	185	180	170	150	110
140	210	205	195	190	180	155	115
160	225	225	210	200	190	165	125
180	240	240	225	215	200	170	130
200	250	250	235	225	215	185	135
225	265	260	250	240	230	200	145

Tab. 2

PVDF - Pipes PN 10 :

d mm	20°C	40°C	60°C	80°C	100°C	120°C	140°C
16	85	80	75	70	65	60	55
20	95	90	80	75	70	65	60
25	100	95	90	85	80	75	70
32	110	100	95	90	85	80	75
40	125	115	110	100	95	90	80
50	140	130	120	115	110	100	95
63	150	140	130	120	115	105	100
75	165	155	140	130	125	115	110
90	180	165	155	145	135	125	120
110	200	185	175	160	150	140	130
125	210	195	185	170	160	150	140
140	225	210	195	180	170	160	150
160	240	225	210	195	185	170	160
200	255	240	225	210	200	185	175
225	270	255	240	225	215	200	190

Tab. 3

PE - Pipes PN 10 :

d mm	20°C	30°C	40°C	50°C	60°C
20	75	70	65	65	60
25	80	80	75	70	65
32	90	90	85	80	75
40	100	100	95	90	85
50	115	110	105	100	95
63	130	125	120	115	105
75	140	135	130	125	115
90	155	150	145	135	130
110	170	165	160	150	140
125	185	175	170	160	150
140	195	185	180	170	155
160	210	200	190	180	170
200	235	220	210	200	186
225	250	235	220	210	200

Tab. 4

Pipe hanger spacing:

The recommended pipe hanger spacing of the tab. 1 - 4 relates to the max. pipe sag of 2,5 mm (0,098") between two pipe hangers and a liquid with a density of $\leq 1 \text{ g/cm}^3$.

The distance between two pipe-hangers is determined by the following:

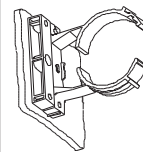
- pipe material
- pipe diameter
- pipe wall thickness
- overage pipe wall temperature
- density of liquid

The pipe hanger distance for vertical piping can be increased of up to 30%. The distance between pipe hangers has to be reduced for liquids with a density of more than 1 g/cm^3 (see following details).

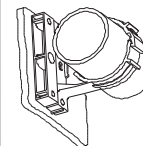
Density of liquid g/cm^3 :

1,25	- 10 %
1,50	- 17 %
1,75	- 23 %
2,00	- 30 %

Mounting instruction:

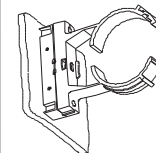


Mount the pipe hanger on the wall, with a dowel and a screw.



Press the pipe towards the wall. Finished!

Mounting of a ball valve:



Turn the levelling stand back and mount it with a screw (10 mm longer). Recommended use before and after each ball valve.

Subjects to technical modification!