



[®] AQUASTAR

fully automatic 6-way backwash valve



Made in Austria/Europe.
www.peraqua.com

PERAQUA[®]

AQUASTAR *easy*

6 way backwash valve, designed for fully automatic and cost-efficient backwashing of smaller filter systems (300, 350, 400).

Additional features of the AQUASTAR easy series:

- Protection rate IP65
- Both valve and actuator housing uv resistant
- Multi-voltage actuator 12 – 34 DC, 12 – 230 V AC (50 – 60 Hz)
- Position 'circulate' can be used in combination with salt water chlorination
- Potential-free clamps, for operating Praher EO510 electric valves
- Direct pump connection
- Easy adaptation to all commonly used filters by means of a 1 ½" or 2" Ocean side- or top mount valve ABS 3,5 bar including Praher PVC & ABS pipes and unions for quick and easy installation
- Available also with manual override – as optional equipment
- Retrofitting of all manual Praher OCEAN V6 side- or top mount valves with new sealing system to all commonly used filters possible

Applications:

Swimming pool and spa industry, swimming ponds, aquaristics, trick fountains



AQUASTAR easy	1000	4000
Time switch	x	x
Pressure switch		x

AQUASTAR easy colour

On minimum orders of 100pcs AQUASTAR easy, the color of the lid can be adapted to the filter system and individual brands applied using laser inscription.



Control options with the membrane keyboard

- AUS OFF** Off The unit is switched off, regardless of the position it is on
- EIN ON** On The unit is switched on. Valve goes to basic position – 'filter' – a yellow control lamp is illuminated
- PRÜFTASTE TESTBUTTON** Testbutton The backwash cycle is triggered for the period of one backwashing operation (green control lamp is illuminated)
- ENTLEEREN DRAIN** Drain Sets the valve to position 'waste' (red control lamp is illuminated), content is pumped into the sewer system
- PRÜFTASTE TESTBUTTON + ENTLEEREN DRAIN** Keeping both buttons pressed for 4 seconds sets the valve to position 'circulate'

Setting of the backwash function with time switch

easy 1000 & 4000, comfort 4000

	Backwash time (S1)	Rinsing time (S2)	Switching times backwash (S3)
	45 sec.	20 sec.	Off
	75 sec.	40 sec.	After 3 days
	2 min.	1 min.	After 7 days
	6 min.	1 ½ min.	After 14 days

Pressure regulation (0,5–3,5 bar)

easy 4000, comfort 4000 & 6500

	0: 0,5 bar	4: 0,9 bar	8: 1,3 bar	C: 2,0 bar
	1: 0,6 bar	5: 1,0 bar	9: 1,4 bar	D: 2,5 bar
	2: 0,7 bar	6: 1,1 bar	A: 1,5 bar	E: 3,0 bar
	3: 0,8 bar	7: 1,2 bar	B: 1,75 bar	F: 3,5 bar

AQUASTAR *comfort*

The ideal fully automatic solution for exclusive private pools, which is also used for public pools and aquaparks.

The AQUASTAR *comfort* series features not only the same characteristics as the AQUASTAR *easy* series (see left), but also provides additional advantages:

- Analog position indication on the actuator lid
- Manual override
- Five Positions can also be controlled with a PCL control (filter, backwash, rinse, waste, circulate)
- Direct pump connection
- Available for Praher OCEAN V6 1 1/2", 2" and 3" side mount or top mount valves, ABS 3,5 bar / ASAGF 6 bar
- Connections for EO510 electric ball valve (potential-free)

Applications:

Swimming pool and Spa industry, water treatment systems, fish farming, trick fountains, cooling towers, water treatment control – carwash



AQUASTAR <i>comfort</i>	3000	4000	6500
Time switch		x	
Pressure switch		x	x
Digital clock	x		x
Filter pump clock			x

Additional functions of the membrane keyboard

comfort 6500



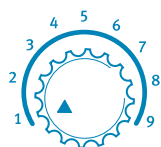
Manual Circulating pump switches on when position 'filter', 'backwash', 'rinse' or 'waste' is reached (regardless of the time program)



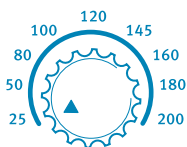
Automatic Only if the filter times are programmed, the circulating pump switches on when position 'filter' is reached

Turn-switch for setting the operating time

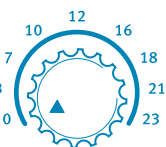
Backwash time
50 sec. – 9 min.



Rinse time
25 – 200 sec.



Time delay
20 sec. – 23 min.



Digital clock for programming the backwash time



comfort 3000

Setting of the backwash time for up to six times per day possible (1-channel clock)



comfort 6500

Setting of the backwash time and filter pump operation time (2-channel clock)

Conversion to manual operation

Quick conversion without any additional tools and dismantling of the valve from automatic to manual override



	AQUASTAR easy 1000	AQUASTAR easy 4000	AQUASTAR mp	AQUASTAR comfort 3000	AQUASTAR comfort 4000	AQUASTAR comfort 6500	AQUASTAR 5000
Time switch	x	x			x		
Pressure switch		x			x	x	
Digital clock				x		x	x
Filter pump clock						x	x
Manual override	<i>Available as optional equipment</i>		x	x	x	x	x
IP65	x	x	x	x	x	x	x
Multi-Volt drive 12–34 V DC, 12–230 V AC (50–60 Hz)	x	x	24 or 230 V	x	x	x	230–400 V*
Waste, filter, backwash, rinse	x	x	x	x	x	x	x
Circulate	x	x	x	x	x	x	
Closed			x				
Pump connection	x	x	x	x	x	x	x
Potential free connection for electric ball valve E0510	x	x		x	x	x	x
Backwash valve 1½" + 2" **	x	x	x	x	x	x	x
Backwash valve 3" **			x	x	x	x	x

* The AQUASTAR 5000 comes with separate control box.

** oCEAN V6 backwash valve, original Praher side - or top mount, various flanges and piping sets available on request for all commonly known filter types.

Filter sizes	300	350	400	450	500	600	650	750	800	900	950
Adapter	1½"	1½"	1½"	1½"	1½"	1½"	1½"	2"	2"	3"	3"
Recommended AQUASTAR models	easy 1000 easy 4000		comfort 4000 comfort 3000 comfort 6500 5000 mp								



Made in Austria/Europe.



english

